



 Website

## Technical data:

### Splash guard / eaves edge

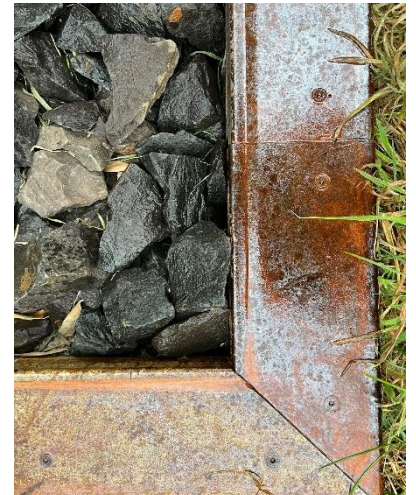
Stand: 02.2025



Installation situation



Splash guard / eaves edge



Corner connection

<b>Splash guard / eaves edge</b>	<b>Edging:</b> Height/width	90/60mm
<b>Material:</b> galvanised steel DX51D+z275MA-C	<b>Material thickness:</b> 2mm	<b>Tensile strength:</b> 250-400 N/mm <sup>2</sup>
<b>Material:</b> terra-S antique steel, corten steel material S355J2WP	<b>Material thickness:</b> 2mm	<b>Tensile strength:</b> 700 N/mm <sup>2</sup>

Profile length: 2400 mm

Special edging (minimum height 80 mm) and lengths on request.

### Wide final edge

Splash guard / eaves edges have a rounded end edge to protect against injury and to prevent damage to robotic lawnmowers / lawnmowers and a wide contact surface (60 mm).

### Splash guard / eaves edge for straight installation

Splash guards / eaves edges are available with 90/60 mm edging in galvanised steel and Corten steel and are only suitable for straight-line installation.

### Design for organic moulds: (see reverse for illustration / description)

**Design for organic moulds:**



Organic shapes are realised with terra-S length profiles.